

LEGEND:

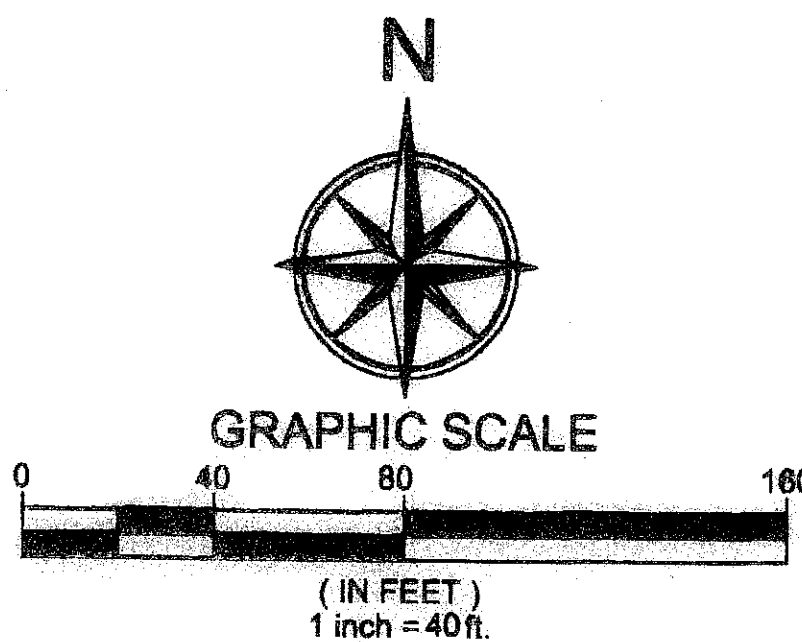
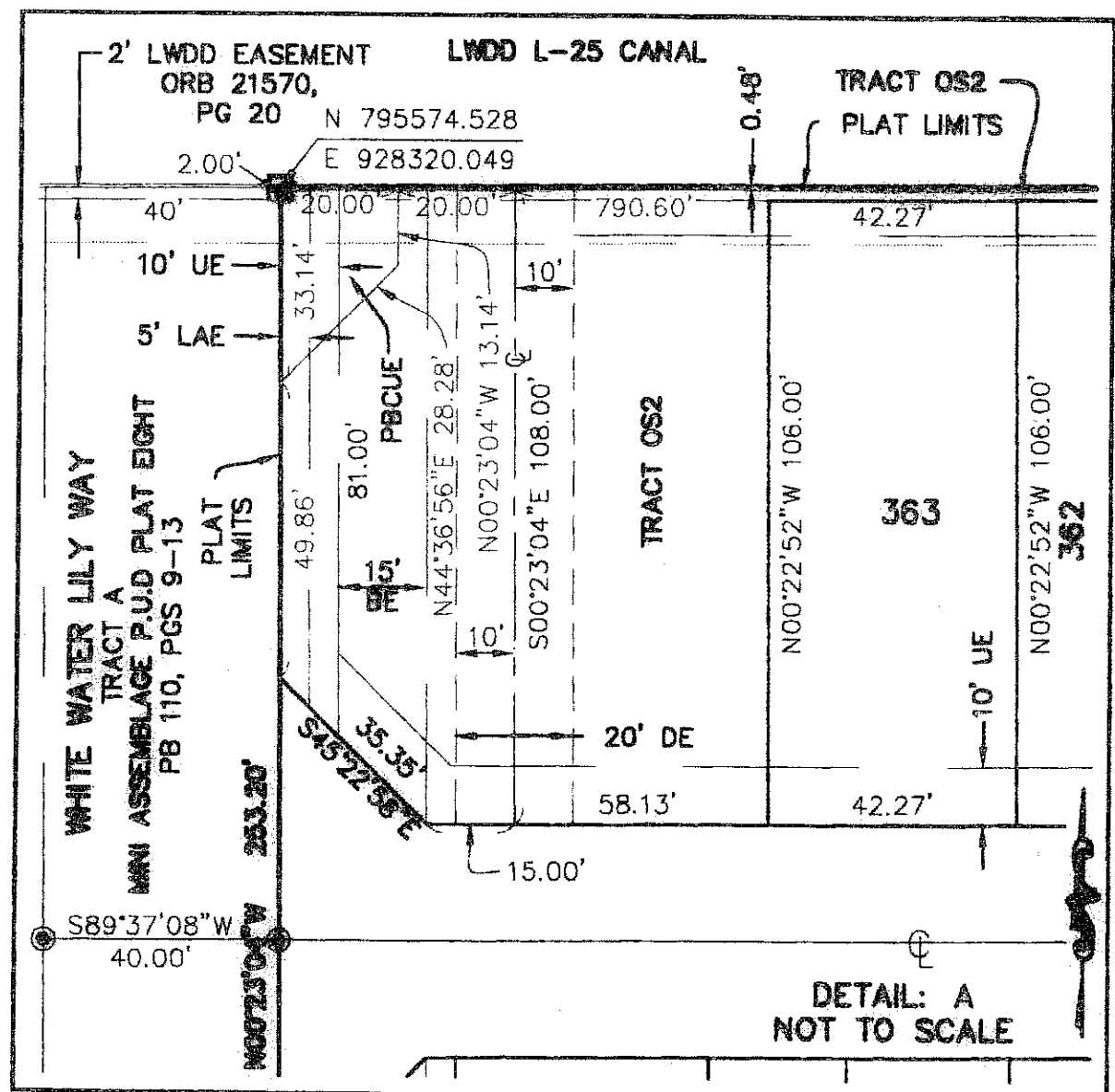
- BE = BUFFER EASEMENT
- DB = DEED BOOK
- DE = DRAINAGE EASEMENT
- ESMT = EASEMENT
- LAE = LIMITED ACCESS EASEMENT
- LWDD = LAKE WORTH DRAINAGE DISTRICT
- OE = OVERHANG EASEMENT
- ORB = OFFICIAL RECORDS BOOK
- PB = PLAT BOOK
- PBCUE = PALM BEACH COUNTY UTILITY EASEMENT
- PBF = PALM BEACH FARMS
- POB = POINT OF BEGINNING
- POC = POINT OF COMMENCEMENT
- PRM = PERMANENT REFERENCE MONUMENT
- P.U.D. = PLANNED UNIT DEVELOPMENT
- PG(S) = PAGE(S)
- R,D&D = ROAD, DIKE AND DITCH RESERVATION
- R/W = RIGHT-OF-WAY
- UE = UTILITY EASEMENT
- C/L = CENTERLINE
- C = CENTERLINE
- ☐ = FOUND PERMANENT REFERENCE MONUMENT (4" X 4" CONCRETE MONUMENT WITH A 2" ALUMINUM PLATE STAMPED "PRM LB 6791")
- = SET PERMANENT REFERENCE MONUMENT (4" X 4" CONCRETE MONUMENT WITH A 2" ALUMINUM PLATE STAMPED "PRM LB 6791")
- ◀ = ZERO LOT LINE SYMBOL
- = PERMANENT CONTROL POINT (SET "PK" NAIL AND DISK LABELED "LB 6791")

# MINI ASSEMBLAGE P.U.D. PLAT NINE

ALSO KNOWN AS GREYSTONE P.U.D.

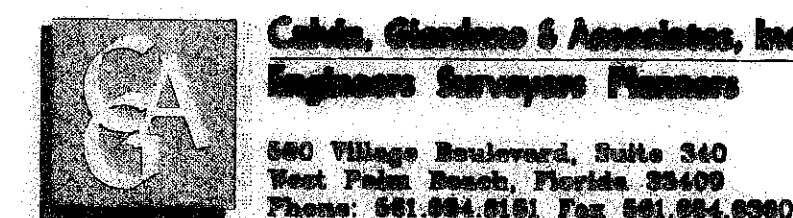
BEING A REPLAT OF A PORTION OF TRACTS 74, 75, AND 76, BLOCK 55,  
 PALM BEACH FARMS COMPANY PLAT NO. 3, RECORDED IN  
 PLAT BOOK 2, PAGES 45 THROUGH 54, PUBLIC RECORDS OF PALM BEACH COUNTY FLORIDA,  
 BEING IN SECTION 28, TOWNSHIP 45 SOUTH, RANGE 42 EAST PALM BEACH COUNTY,

STATE OF FLORIDA  
APRIL 2007 SHEET 2 OF 2

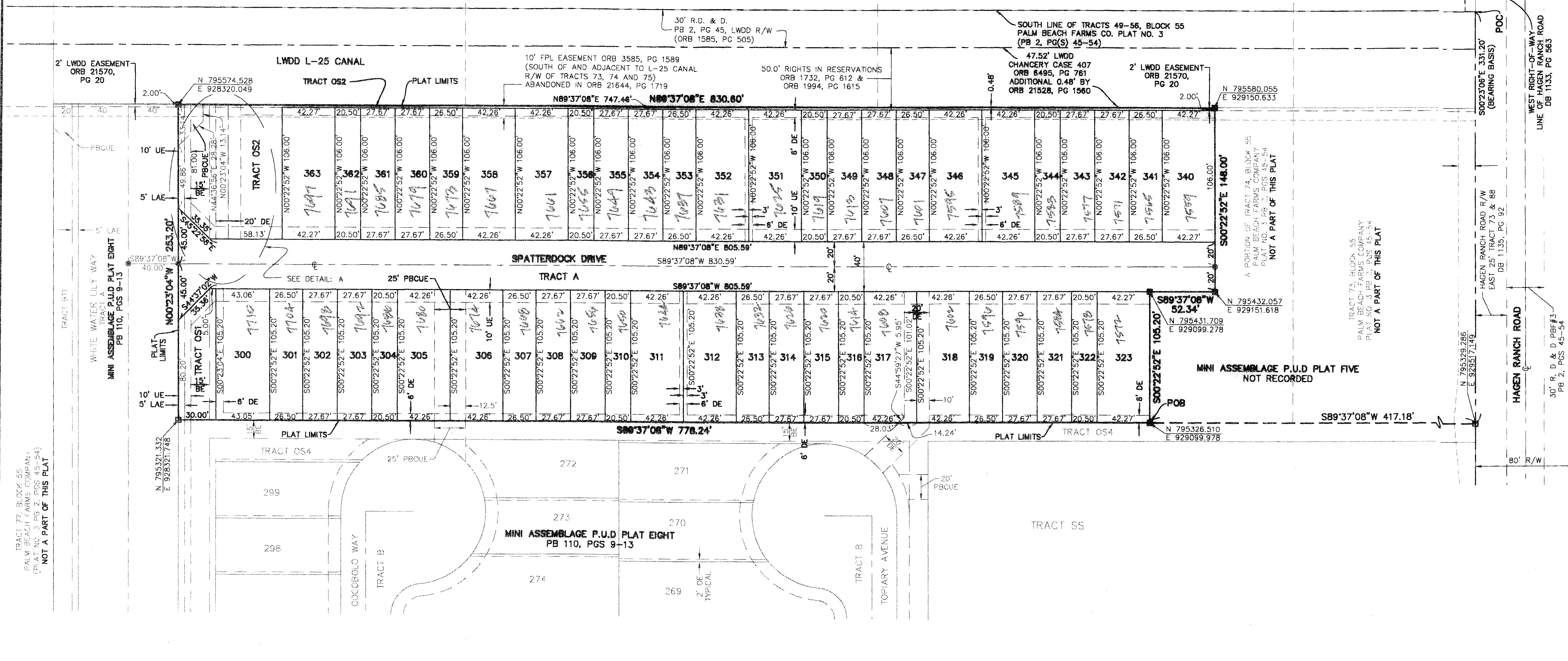


196

This Instrument Prepared By:  
 Kevin M. Beck, P.S.M.  
 Certificate of Authorization No. LB 6791  
 APRIL 2007



560 Village Boulevard, Suite 340  
 West Palm Beach, Florida 33409  
 Phone: 561.884.6161 Fax 561.884.6980



E:\0505\_052914 Mini Assemblage Boundary and Plat 11 SURVEY\PLAT 9-13.PLT\11-20-07.DWG 11/20/07 10:59 AM EST